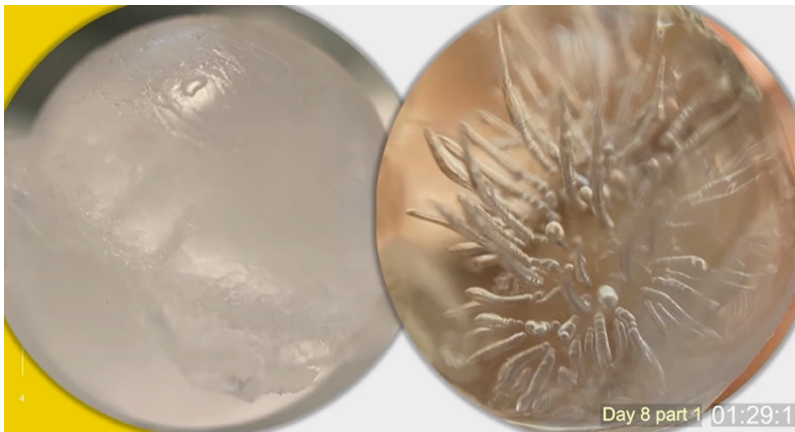


# Daily Drinking and Cooking Water Purification Process

## Dr. Henry Ealy Presentation at Healing for the AGES

Control what you can control .... Your Water.

Do today's work.



Dr Ealy made this structured water on the right from the tap water on the left.

Berkey Fluoride filters are NO GOOD.  
Take them out. Bad design.

## WHAT'S IN YOUR WATER?

- **Fluoride** – Binds Magnesium Essential for ATP Formation
- **Lead** – Inhibits Red Blood Cell Formation
- **Aluminum** – Sodium Fluoride is waste product of Aluminum
- **Chlorine** – Used to Kill Microorganisms, Creates Chloroform "Knock-Out" Gas
- **Pesticides**
- **Genetically Infected Microorganisms**
- **MTBE** – Rocket Fuel
- **Recycled 'Reclaimed' Water from the Toilet with Antibiotics, Antidepressants, Blood Pressure Meds, Et all.**
- **Weaponized Bacteria & Plasmids!!!!**



Our guidance on the topic continues to evolve. In the U.S...Please go to

<https://www.ewg.org/tapwater/> - to enter your zip code and see just how toxic your tap water is. It really isn't even fit for dishwashing or bathing in, but those are lesser issues compared to consuming it. Currently, we are recommending a 3-Stage Purification & Structuring Process for cleaning tap water and transforming it into cell signaling medicine for your body.

# LET'S MAKE HOLY WATER!

## Prep



<https://earthharmony.com/products/hydrogen-peroxide>

## Stage 1



<https://alexapure.com/>

## Stage 2



<https://www.h2olabs.com/>

## Stage 3



<https://thewellnessenterprise.com/>

**OPTIONAL PREP** >> Collect tap water in a glass jar. Add 19 drops of 6% Food Grade Hydrogen Peroxide (H<sub>2</sub>O<sub>2</sub>) to 1 gallon of tap water. Place glass jars in direct sunlight outdoors if the weather is agreeable or near a window in your homes if it is not. Glass jars can be left out for as long as you like, but a minimum of 1 to 2 hours is a good idea.

<https://earthharmony.com/products/hydrogen-peroxide>

Use Discount Promocode “EHI” – if you are going to purchase it from earthharmony.com.

**Stage 1 Filtration** – Gravity Filtration, Ultrafiltration, Nanofiltration, or Reverse Osmosis of tap water with or without optional prep with H<sub>2</sub>O<sub>2</sub> and sunlight. The ideal micron size for the filter is 0.01 microns or smaller. This will ensure that plasmids are very unlikely to pass through the filter and remain in your water. We currently recommend Alexapure Pro Water Filtration Systems and Alexapure Pro Genuine Replacement filters for Stage 1. <https://alexapure.com/>

**Stage 2 Distillation** – Steam Distillation with secondary carbon filtration of the filtered water from Stage 1. H2Olabs offers reliable and very affordable home distillation units with additional carbon filtration. <https://www.h2olabs.com/>

**Stage 3 Structuring** – Use a Certified Structuring Device (and/or say a prayer of Gratitude) to bring energy and order to your Stage 2 water. Structured water will improve how your cells communicate with each other and within themselves. Yes, any water can be structured. However, water that is purified using the methods shared here ensures healing potential

longevity by the structured water in addition to its being both poison and pollution-free. For these reasons perhaps it actually is holy. For one thing, it sure does taste like it.

<https://thewellnessenterprise.com/certified-structured-water-device/#choose-your-device>

What % of your body is water? Your body is 2/3 to 3/4 water depending on age.

Dr. Ealy does not recommend using the fluoride filters because he feels it does not work.

He, personally, will NOT use the white fluoride filters from Berkey. Bad design.

The black carbon Berkey filters are OK.

Best is to do the 2-Stage filtration and distillation process at a minimum.

Black Berkey and the Alexapure are the only two filters that freezes at 37 deg. None of the others formed crystals after two stages of filtration.



Distiller – Dr. Ealy recommends H2O labs.

Aqua Energizer (stage 3) – go to <https://thewellnessenterprise.com/certified-structured-water-device/#how-a-e-works>; They are pricey at \$600. Only need one. Whole house is \$1800.

\*\*\*\*\*

# Water Purification Methods

Safrax Chlorine Dioxide Water Purification Tablets

<https://safrax.com/shop/>

You can make your own chlorine dioxide solution; however, it is much easier to have enough of the tablets on hand.

**DISIN-CLO2**

Instant Chlorine Dioxide Tablets For  
Disinfection



1 Bag contains 5 x 100 grams / tablets

**\$30.00**

Just in case you do not access to the Safrax calculator when you are figuring appropriate PPM for your usage: 1 Tablet + 1 Gallon of water = 26.46 PPM chlorine dioxide  
Then you can divide 26.46 by 2, 3, or 4 gallons to the PPM.

<b>S a f r a x ® W a t e r P u r i f i c a t i o n</b>				
	Rainwater:	Tap Water:	Pond, Lake or River Water:	Stagnant or Standing Water:
Type of Water Source	Typically cleaner but might contain environmental contaminants.	Varies depending on the municipal source. Might already be chlorinated. Contains piping contaminants/ biofilm.	Contains organic materials and potentially pathogens.	Risky due to potential microbial growth. Lots of biofilm.
Recommended Dosage	<b>1 to 3 PPM</b>	<b>1 to 3 PPM</b>	<b>2 to 10 PPM</b>	<b>5 to 25 PPM</b> <b>25 PPM and up</b>
Frequency of Treatment	Use our Safrax® DOSAGE CALCULATOR: <a href="http://www.safrax.com/calculator">www.safrax.com/calculator</a>			
	<p>The frequency of Safrax® dioxide dosing helps maintain your water's potability and prevents biofilm and algae buildup in your tank.</p> <p><b>Long-Term Storage:</b></p> <ul style="list-style-type: none"> <li>• For tanks exposed to sunlight: Add tablets every 5 to 7 days.</li> <li>• For tanks not exposed to sunlight: Add tablets every 15 days.</li> </ul> <p><b>Continuous Use:</b> For ongoing treatment, utilize an injector or dispenser.</p> <p><b>Note:</b> Safrax® chlorine dioxide is <b>not corrosive</b> at these concentrations, ensuring that it won't damage any type of piping or tank material.</p>			
<p>In <b>Emergency Water Purification situations</b>, especially during disaster scenarios, the level of contamination plays a critical role.</p> <p>The extent of contamination, evident from factors like color, smell, presence of biofilm, and algae, dictates the required dosage. <b>More polluted water typically demands a higher initial dose.</b></p> <p>Upon adding Safrax® chlorine dioxide tablets to the water, allow it to sit for several minutes. The water should emit a faint scent reminiscent of a chlorinated pool. If this odor isn't noticeable, it's advisable to administer an additional dose and let the water sit for another few minutes.</p> <p><b>The presence of this "chlorine pool" smell or a slight "yellowish/greenish" tint indicates that the chlorine dioxide hasn't been entirely consumed by pathogens or contaminants; Highly contaminated water tends to deplete chlorine dioxide rapidly.</b></p> <p><b>If the chlorine taste or scent is overpowering, dilute with more water.</b></p> <p>For instance, when considering emergency water sources, such as a pool, the typical chlorine dioxide dose required to make the water potable usually ranges between 5 and 100 PPM.</p>				